

ENVELOPING

An interest in enveloping (wrapping) themselves or objects. In this schema children are trying to work out what happens if they wrap/hide something. Internally they are experimenting and asking questions like 'Can I still see it? Can I feel it? What if I wrap it in a different material?'



Offer empty boxes to fill with bits and pieces. Wrapping paper for presents. Crayons and paper for scribbling and enveloping pictures.



"Make a time capsule with your child. Find special items, pictures and art work to bury and dig up years later."



Giving children boxes to hide toys and other loose parts will develop their understanding of enveloping.

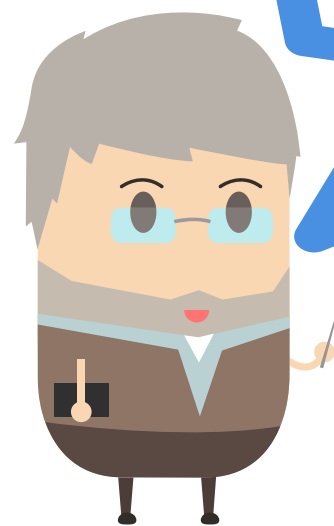


Teaching children to write and send letters can also be useful. Putting pictures and other items in envelopes shows them how to keep things private.

Children like to dress up. Offering clothes to wear and bandages to wrap up people and toys can also develop the enveloping schema.



Very young children may draw on walls or other items. They may hide objects and forget where they put them like keys or phones. Keep these types of objects some place safe. Allow children to help with making and wrapping presents.



A horizontal strip of eight small infographic cards, each representing a different schema: POSITIONING, TRAJECTORY, ENCLOSING, ORIENTATION, TRANSPORTING, ROTATION, CONNECTION, and TRANSFORMING. Each card includes a title, a brief description, and small illustrations related to that schema.