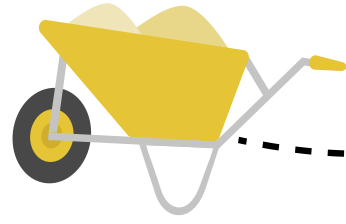


# TRANSPORTING

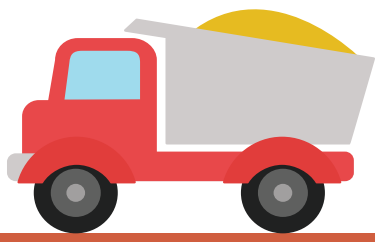
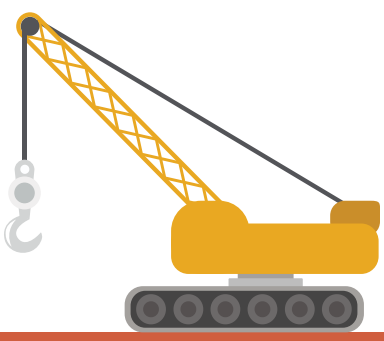
The transporting schema helps children explore concepts like distance. It helps build gross and fine motor skills as well as problem solving skills. Early on children like to hold and transport objects that are too heavy for them. Children also enjoy going to places by different modes of transport to see how they are similar and different.



Children love to transport themselves. Give them a safe space to do so. Don't put them in a baby walker. When older, children love to transport a special item like a teddy when they go somewhere.



“Children are often fascinated by construction and this is often linked to the transporting schema. Construction machines transport materials in a variety of ways.”



Taking children shopping is great to help them explore transporting. Asking them to find items and letting them push the trolley can really help them further the schema.

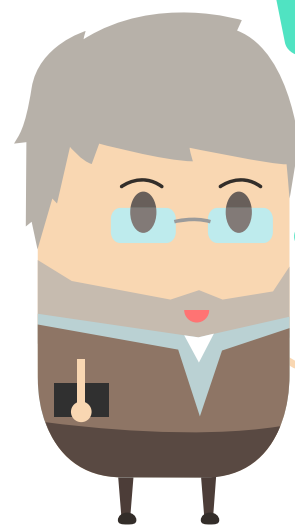


A great way to help children develop their transporting schema is let them pack their own bags or suitcases for school and holidays.

Children love to explore new ways to transport. If possible let the explore transport by air, land and sea. Talk with them about each.



For parents and teachers the transporting schema can be frustrating. Children often move things adults don't like. Sometimes putting clay, food and other items in their pockets to transport and then later forgetting what they moved.



A row of ten small infographic cards, each representing a different play schema: POSITIONING, TRAJECTORY, ENCLOSING, ENVELOPING, ORIENTATION, ROTATION, CONNECTION, and TRANSFORMING. Each card includes a title, a brief description, and various icons related to that schema.